



### Installation-Profile connection



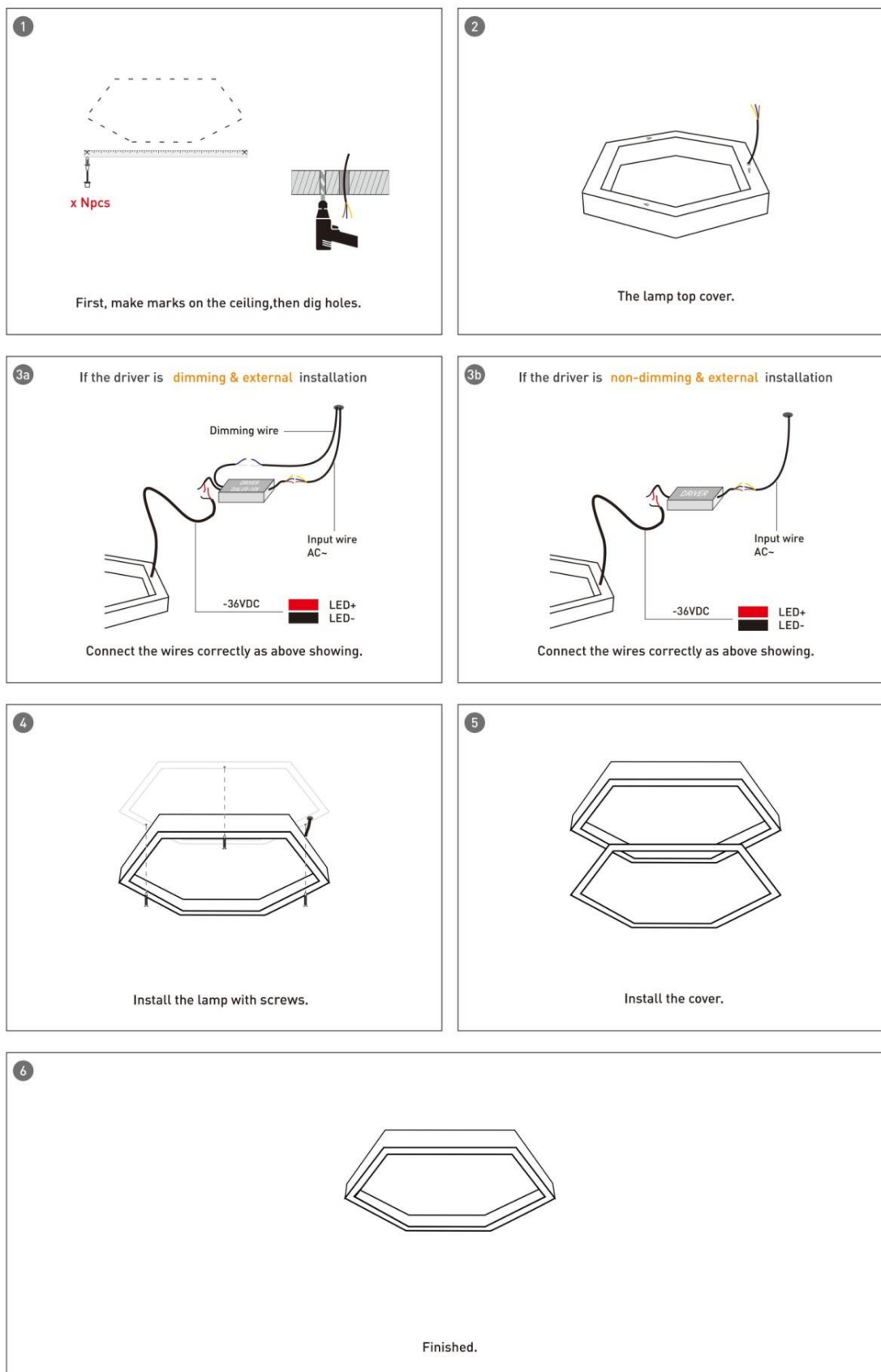
### Installation-Cover



### Installation-End cap



## Installation-Screws ceiling



## Installation-Pendant with ceiling box

1


First, make marks on the ceiling, then dig holes.

2


Second, fixed the terminals of the pendant suit and box holder with screws

3


Install the terminals of the pendant suit.

4


Install the lamp as the picture shows.

5a

If the driver is **dimming & external** installation



Connect the wires correctly as above showing.

5b

If the driver is **non-dimming & external** installation



Connect the wires correctly as above showing.

6

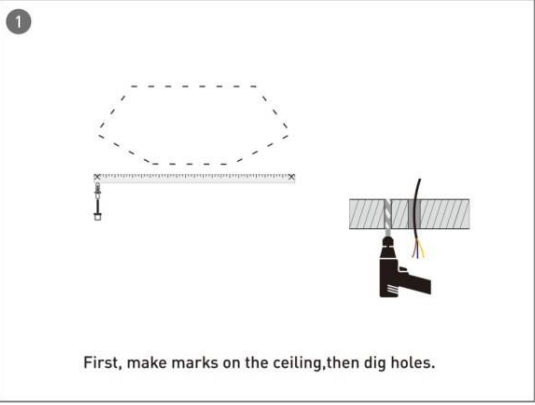

Install the big box as above showing.

7


Finished


### Installation-C Clip ceiling

1



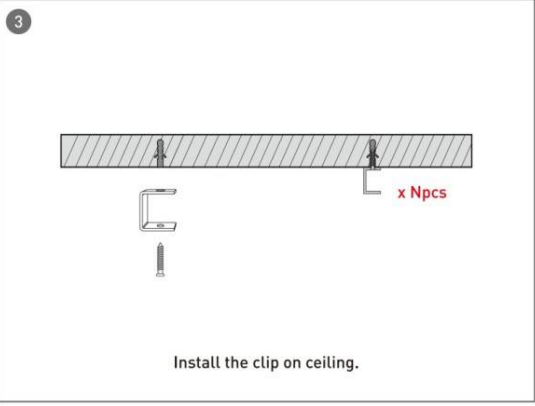
First, make marks on the ceiling, then dig holes.

2



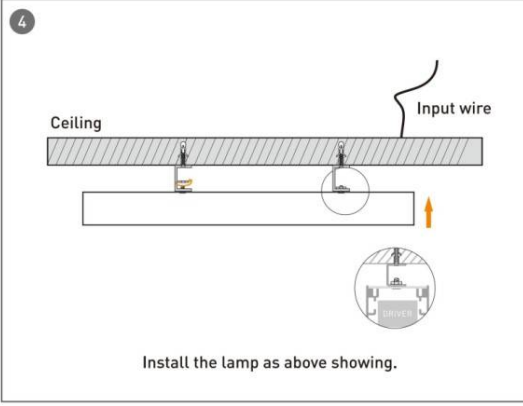
The lamp top cover.

3



Install the clip on ceiling.

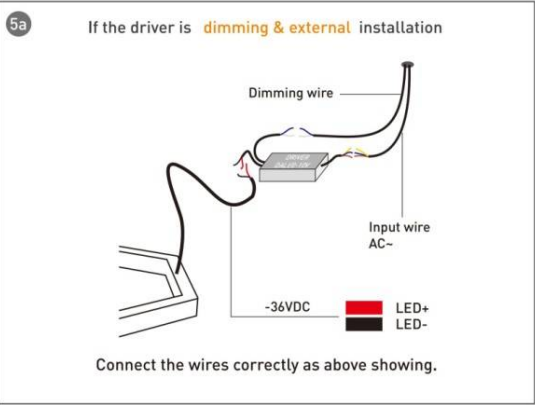
4



Install the lamp as above showing.

5a

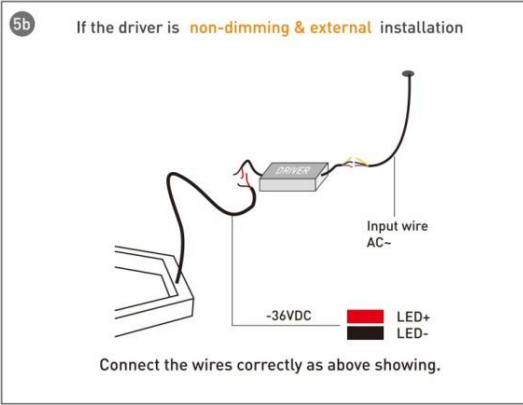
If the driver is **dimming & external** installation



Connect the wires correctly as above showing.

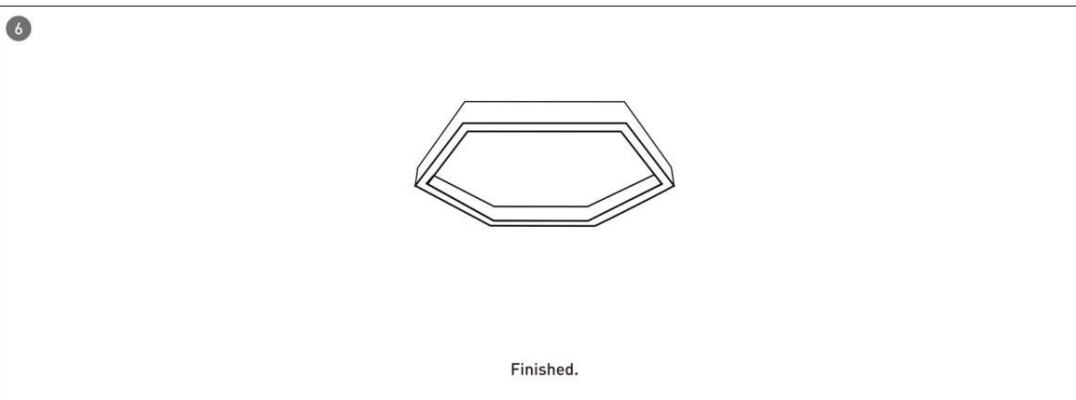
5b

If the driver is **non-dimming & external** installation



Connect the wires correctly as above showing.

6



Finished.